



Swelab™ Alfa Plus 3-part hematology analyzer Better equipped than ever before

Swelab hematology systems raise quality
and reliability to higher levels.

Equipped to deliver results you can trust

Building on a proud tradition that dates back to 1956, Swelab Alfa Plus analyzers come packed with user-friendly technologies that make it easy for you to obtain, analyze and share accurate hematology results. Swelab is in the prime of its life, raising quality and reliability to ever-higher levels. There has never been a better time to put one in your lab.

Sampling to full CBC in about one minute

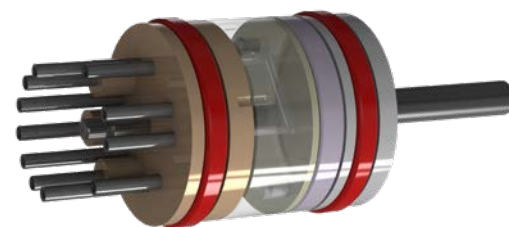
Three Swelab Alfa Plus analyzers include micro-pipette adapter (MPA) sampling. This feature transforms Swelab into one of the fastest blood cell counters in the world. Simply make a finger stick, draw blood into the special 20 μ L micro-capillary tube, slide it into the adapter and insert it in the analyzer. In about one minute later, you see the full blood status on the touchscreen. No preparation, no pre-dilution, no vacuum tubes and no needles are required. As making a finger stick is largely painless, MPA is suitable to take and analyze blood samples from children. For blood banks, MPA allows for making fast, pre-donation blood testing, while saving the vein for donation.



Swelab Alfa Plus analyzers deliver a full CBC from just 20 μ L of blood, suitable for children and blood banks.

Accurate results start with precise collection

The sampling technique is a critical part of the measurement and reflected in the accuracy of every result you report. Every Swelab Alfa Plus analyzer therefore comes equipped with a high-precision shear valve. Not only is the Swelab shear valve extremely precise to deliver accurate results, it is also maintenance-free for you to enjoy significantly reduced maintenance costs.



Maintenance-free Swelab Alfa Plus shear valve secures accurate results and lowers maintenance costs.

Swelab Alfa Plus also provides an extended platelet (PLT) count for more accurate results in the critically low PLT range. In case of a patient sample with severe thrombocytopenia detected, the analyzer will activate PLT extended count, counting three times as many platelets as in normal count mode, to be able to give a more accurate PLT result. PLT results analyzed with extended count will be marked with an asterisk (*).

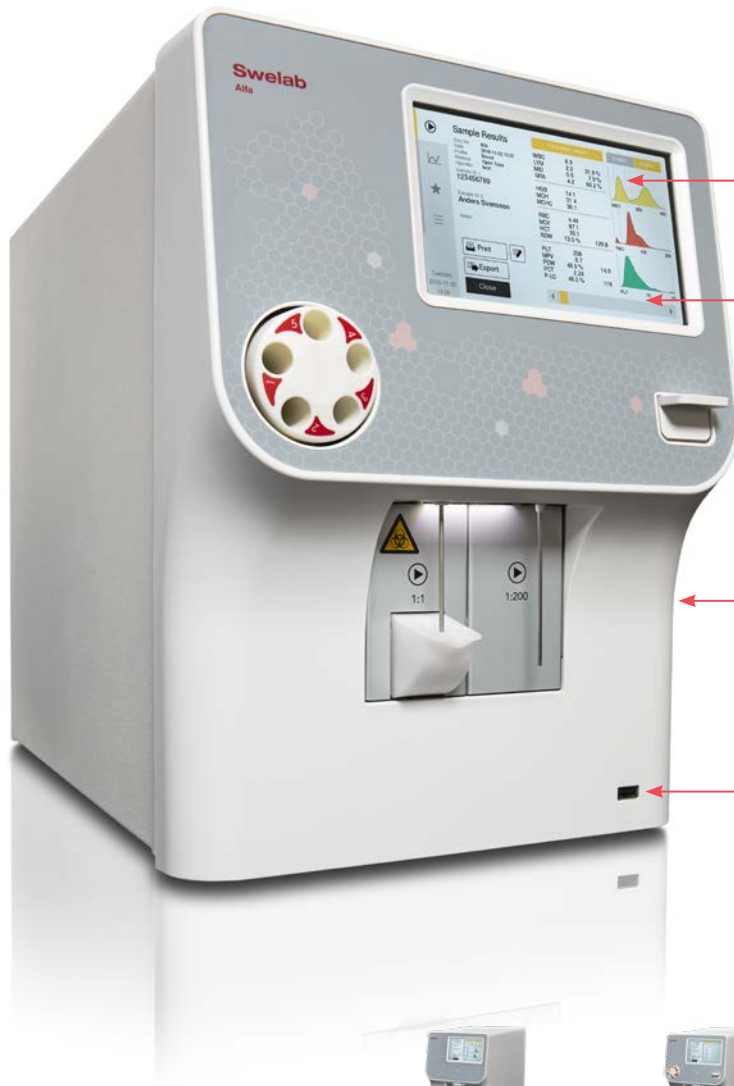
Gets on with the job all by itself

Much as you will enjoy working with your Swelab analyzer, there will be times when you need to leave it to analyze a whole batch of samples by itself. For these occasions, the Sampler model is the instrument of choice to have on your bench. As the top-of-the-range model, Swelab Alfa Plus Sampler is the walk-away analyzer well-suited for many small- to medium-sized hospitals. Just pre-load up to 2 \times 20 samples and let it do the work!



Pre-load up to 2 \times 20 samples and let Swelab Alfa Plus Sampler do the work.

Multiple models to fit your needs



Intuitive software

Simplifies work processes and gives the operator control of sample results and patient records.

Easy-to-use interface

Interface design promotes smooth operation and accurate assessment of results. Menus are simple to understand and easy to navigate.

Ergonomic design

The analyzer is designed to facilitate sample handling.

Flexible connection options

Allow for connection of printer, keyboard, barcode reader, USBs, etc. and send results to LIS via LAN.



Model characteristics

Built-in tube mixer
 Micro-pipette adapter (MPA)
 Maintenance-free shear valve
 Pre-dilution mode
 Cap-piercing device
 Autosampler

Basic

Standard

Cap

Sampler

Built-in tube mixer		•		
Micro-pipette adapter (MPA)		•		•
Maintenance-free shear valve	•	•	•	•
Pre-dilution mode	•	•	•	•
Cap-piercing device			•	•
Autosampler				•

Specifications

Parameters

22 parameters:

- WBC, LYM, MID, GRAN, LYM%, MID%, GRAN%, RBC, MCV, HCT, PLT, MPV, HGB, MCH, MCHC, RDW%, RDW, PCT, PDW%, PDW, P-LCR, P-LCC

Throughput

60 samples/hour
 50 seconds, time to results, OT inlet

Sample volume

Open tube (OT): 110 µL
 Capillary (MPA): 20 µL
 Prediluted: 20 µL
 Cap piercer: 250 µL
 Autosampler: 300 µL

Sampling system

Closed shear valve

Reagents

- 2 RFID locked reagents are used for analysis:
- Swelab AlfaDiluent
 - Swelab AlfaLyse

Display

7 inch TFT touch screen

Data storage capacity

50 000 samples

Interface ports

4 USB ports, 1 LAN port that supports LIS/HIS communication through HL7 protocol

Printout

Postscript-compatible printers supporting PCL 3/5e

Precision (typical value)

WBC CV ≤ 3.5% (1.7%)
 RBC CV ≤ 1.8% (0.9%)
 MCV CV ≤ 1.5% (0.4%)
 HGB CV ≤ 1.5% (0.5%)
 PLT CV ≤ 5.2% (3.0%)

Dimension

295 (W) × 475 (D) × 395 (H) mm (Basic/Standard/Cap)
 340 (W) × 475 (D) × 395 (H) mm (Sampler)

Weight

≤ 18 kg (Basic/Standard/Cap)
 ≤ 22 kg (Sampler)

Boule Diagnostics AB is a company that develops and manufactures systems and consumables for hematology diagnostics for public healthcare providers worldwide. The company is primarily focused on small and medium-sized hospitals, clinics, and laboratories in outpatient care as well as other diagnostics companies in both human and veterinary hematology. The group comprises operating subsidiaries in Sweden, the US and Russia. Since 2011, Boule Diagnostics shares are traded on NASDAQ OMX Nordic.

Swelab Alfa Plus hematology analyzers are part of our Total Quality Concept that comprises instruments, reagents, quality control materials and service, an unbroken chain of know-how in quality hematology measurements.

Swelab hematology analyzers Still counting. Since 1956.

For more information about Swelab Alfa Plus,
please visit swelab.se

Boule Diagnostics AB
Domnarvsgatan 4
SE-163 53 Spånga, Sweden
Phone +46 8 744 77 00
E-mail info@boule.com
boule.com

Swelab is a trademark of Boule Medical AB.
© 2019 Boule Diagnostics AB. BPS31736-2 12/2019

