

# Automated hematology analysis: understanding histograms and scatterplots

---

Hematology analysis is a cost-efficient tool that provides useful information to clinical assessments. A complete blood count (CBC) is often requested in initial disease investigation, as the results form the basis for decision-making regarding further testing, diagnosis, and treatment. A CBC test can give an indication of a variety of diseases and conditions that affect the blood cells, such as anemia, infection, or leukemia. This paper aims to provide an understanding of the cell count results visualized in histograms and scatterplots by an automated hematology analyzer.

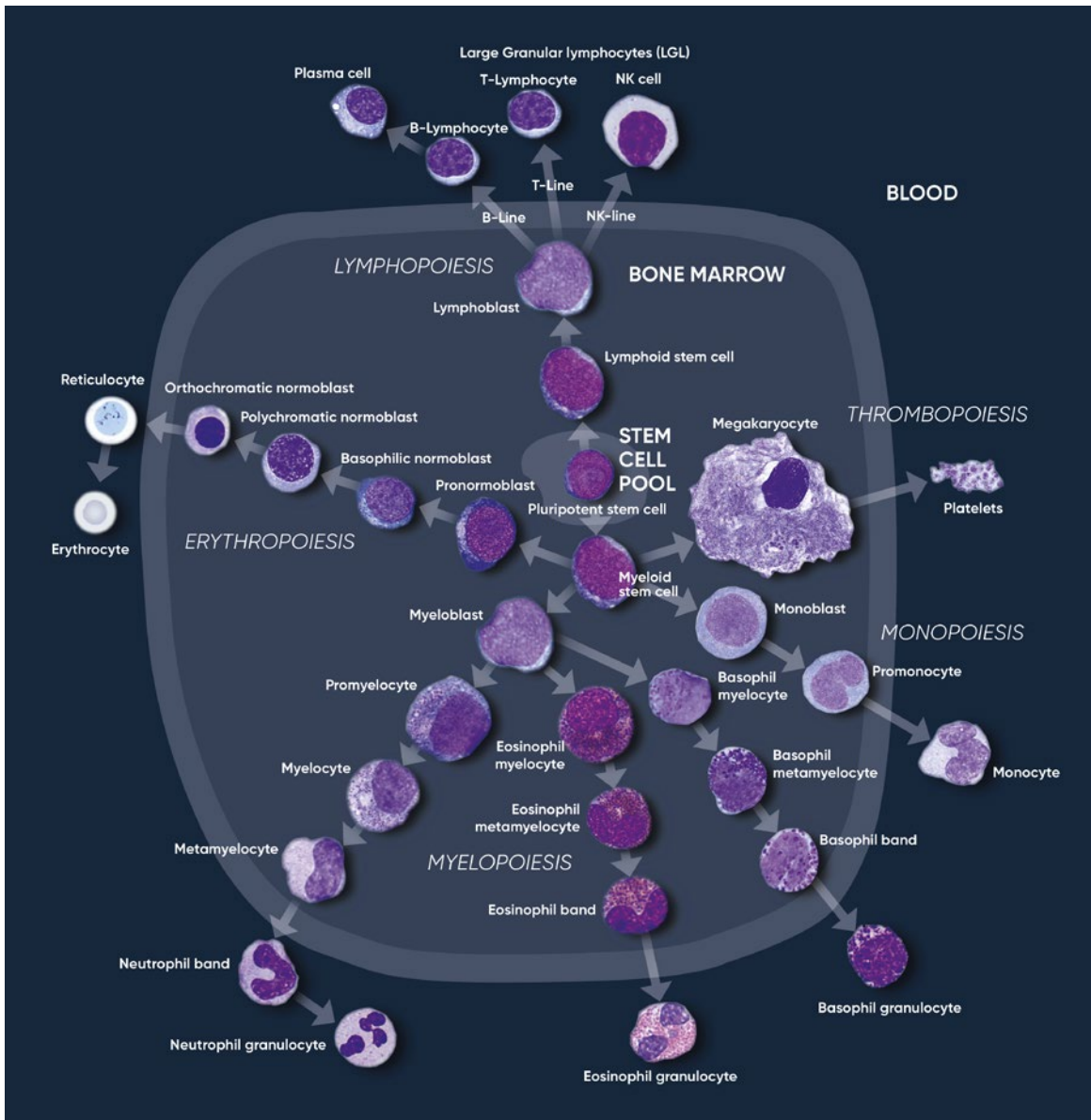
## Introduction

Through a process called hematopoiesis, blood cells are derived from pluripotent hematopoietic stem cells in the bone marrow, where they mature before being released into circulation (Fig 1). In healthy adults, about one trillion ( $10^{12}$ ) new blood cells are produced every day. The release of mature cells into circulation and their migration to various tissues are the result of organs communicating through the endocrine signaling system. The presence of immature cells in the bloodstream can therefore be an indication of a bone marrow failure. Additionally, many factors can make normal cells appear abnormal, including inflammation and infection, and abnormal cells can change back to normal cells if the underlying cause is removed or resolved.

A CBC test evaluates the cells in circulation, including the oxygen-carrying red blood cells (RBC), the platelets (PLT) that help clot the blood, and the white blood cells (WBC) of the immune system. The cell count reflects the specific need for the different cell populations at a specific timepoint.

Hemoglobin-rich erythrocytes are the most common blood cells (normal range  $\sim 4\text{--}6 \times 10^{12}/\text{L}$ ). Their main function is to carry inhaled oxygen from the lungs to the tissues and organs of the body and remove carbon dioxide that is carried back to the lungs and exhaled.

The primary function of platelets (normal range  $\sim 130\text{--}400 \times 10^9/\text{L}$ ) is to prevent bleeding. They interact with each other and other cells such as the WBCs and vascular endothelial cells to search for sites of injury, where they become activated.



**Fig 1.** Overview of the hematopoietic blood cell production process (cell images by Sigward Söderström and Helene Johansson, Örebro University Hospital, Sweden), which is growth factor-dependent and strictly regulated to maintain steady-state blood levels. Abnormally high or low levels are associated with different types of disease conditions.

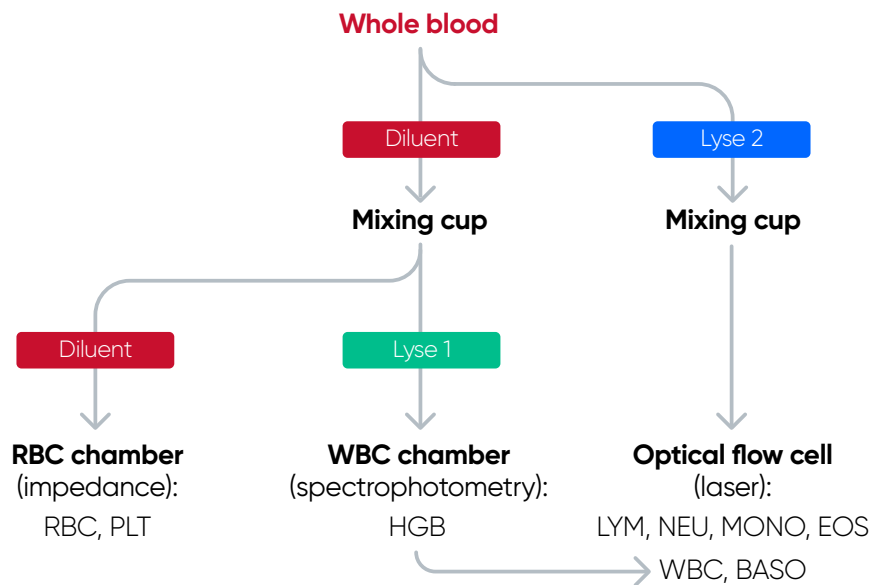
As part of the CBC, a WBC differential count is often conducted. In normal blood, about 50%–70% of the WBCs are neutrophil (NEU) cells. NEUs help fight bacteria (and fungi), and a high count is often associated with a bacterial infection. Lymphocyte (LYM) cells, accounting for about 20%–30% of all WBCs, help fight viruses. A high LYM count can therefore be an indication of a viral infection. The last 10% comprises monocyte (MON), eosinophil (EOS), and basophil (BAS) cells. These cell types are typically associated with allergies and parasite infections. A high MON number (2%–8% normal), for example, can indicate a chronic inflammatory disease, whereas a high EOS count (1%–4% normal) can be an indication of asthma, an allergic reaction, or a parasite infection. A high BAS number (< 1% normal) is typically associated with an inflammatory reaction, especially such that causes allergic symptoms. High numbers of the WBCs can also be an indication of certain forms of cancers, such as leukemia or lymphoma.

In addition to reporting the blood cell counts, an automated hematology analyzer determines a range of other parameters, such as hemoglobin (HGB) content; parameters related to cell size such as the mean corpuscle volume (MCV), mean PLT volume (MPV), RBC distribution width (RDW), and PLT distribution width (PDW); as well as calculated parameters such as the mean red cell hemoglobin (MCH = HGB/RBC), mean red cell hemoglobin concentration (MCHC = HGB/HCT), hematocrit (HCT = RBC × MCV), and plateletcrit (PCT = PLT × MPV).

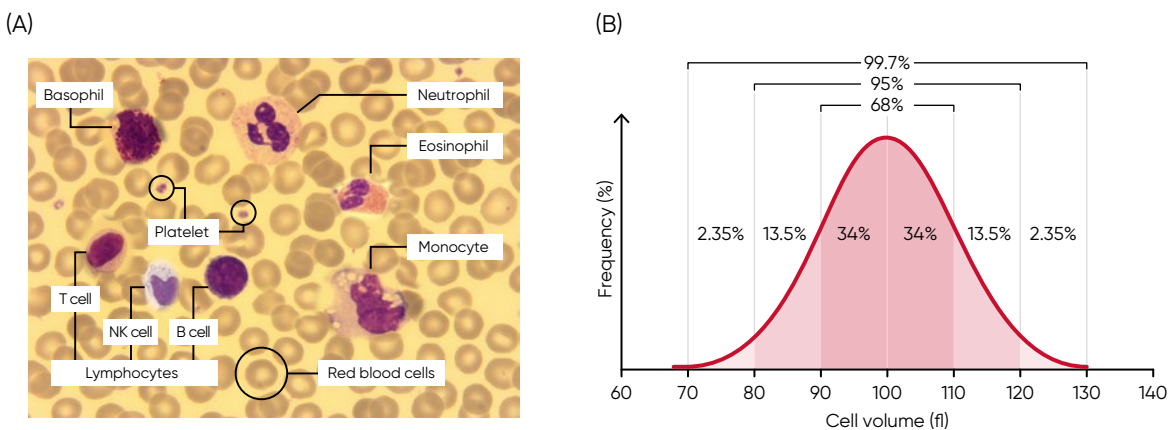
## Automated hematology analysis results

The cell counts are performed in parallel cycles on the automated hematology analyzer (Fig 2). A dilution reagent provides an isotonic environment for the RBC and PLT counts, while hemolytic reagents lyse the RBCs to release HGB and maintain the morphology of white blood cells to facilitate the counting of these cells. The results are presented as parameter values as well as in histograms and scatterplots, which are graphical representations of the numerical data of the different cell populations.

Histograms provide information about the average volume of RBC, PLT, and WBC cell populations, size distribution of the cell populations, and detection of subpopulations. The x-axis represents the volume of the cells in femtoliters (fL), whereas the y-axis represents their relative occurrence (number of cells) in percent (Fig 3). A normal histogram starts and ends on the baseline (Fig 4).



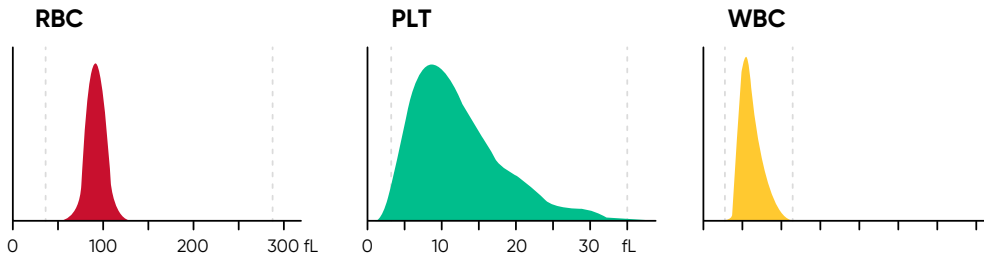
**Fig 2.** Measurement principle of Swelab<sup>™</sup> Lumi automated hematology system.



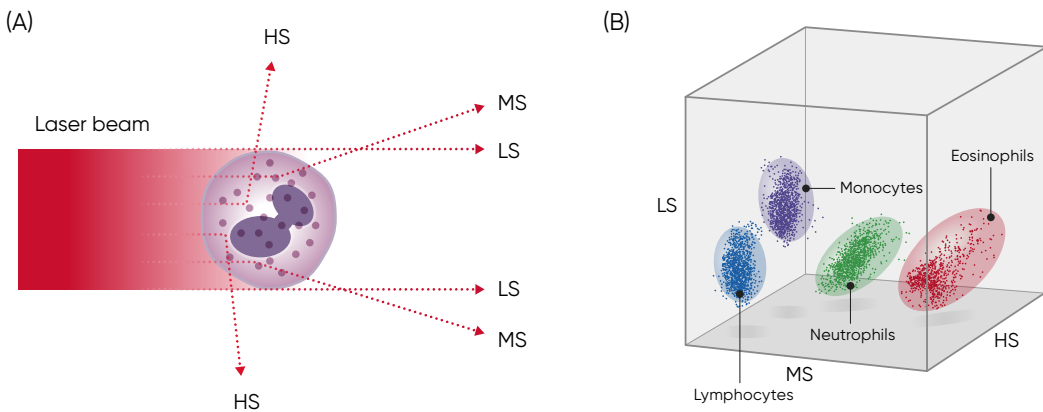
**Fig 3.** (A) Giemsa-stained blood cells photographed at 1000× magnification using a light microscope. (B) Cell variation in size within an individual population is called intra-individual biological variation. This variability has certain limits and is called Gaussian (or normal) distribution.

In a three-angle scatterplot, the low angle signal represents the volume of the cells, the middle angle signal represents cell nucleus information, and the high angle signal represents cell nucleus and cytoplasm information (Fig 5).

The histograms and scatterplots constitute important parts of the results and should be carefully studied, as they provide valuable and important insights about the sample processed by the analyzer.



**Fig 4.** In Swelab Lumi, results for red blood cell (RBC), platelet (PLT), and white blood cell (WBC) counts are visualized in histograms.

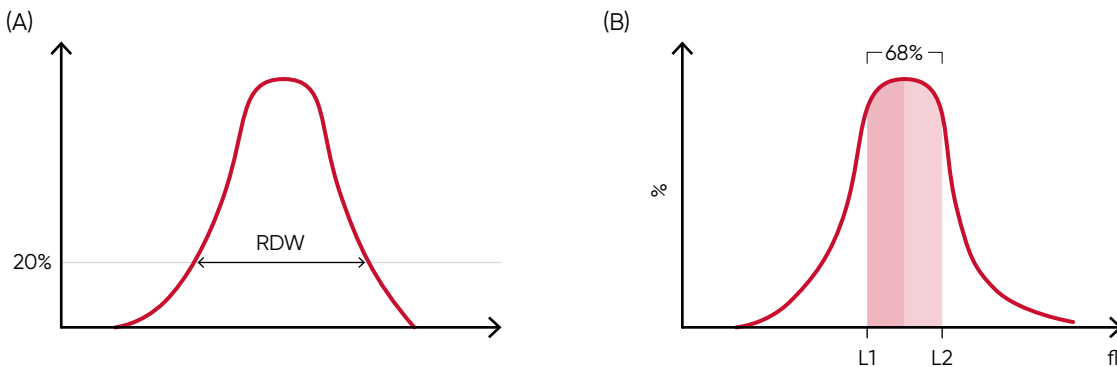


**Fig 5.** (A) Three-angle laser-scatter method, where the low angle signal (about 1° to 5°) represents the cell volume information, the middle angle signal (about 7° to 20°) represents the cell nucleus information, and the high angle signal (about 90°) represents the cell nucleus and cytoplasm information. (B) In laser-based WBC differentiation, cell distribution is displayed in a 3D diagram, with the low, mid, and high angle light scatter signals on the axes (scatterplot).

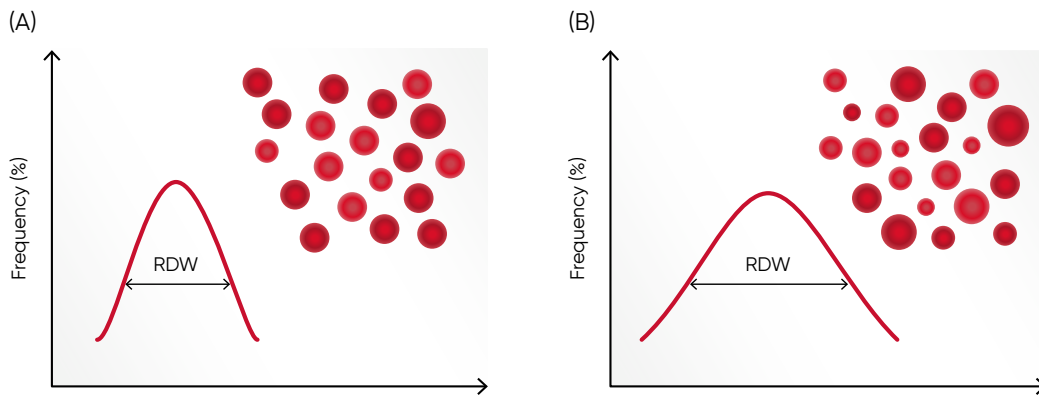
## The RBC histogram

From the RBC histogram, the MCV and RDW values are calculated from the area under the curve (Fig 6). MCV is the average RBC volume, while RDW provides information about the degree of variation in RBC size (Fig 7). Examples of erythrocyte abnormalities are shown in Figures 8 to 12.

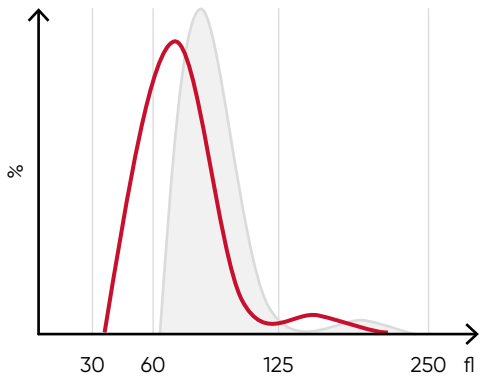
Correct treatment of the blood sample prior to analysis is vital for the accuracy of the results. The blood sample must be less than eight hours old in order to obtain a correct WBC differential (Fig 13). The results are also affected if the sample is not allowed to rest for 15 min after drawing.



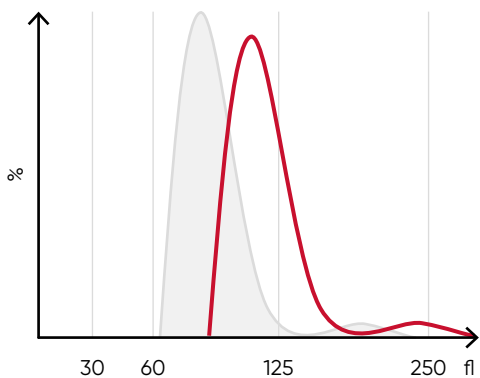
**Fig 6.** In Swelab Lumi, MCV is calculated as the sum of the size of all counted RBC pulses divided by the number of RBC pulses. (A) RDW-SD is the standard deviation of the average RBC size obtained by drawing an arbitrary line at a height of 20% of the y-axis. (B) RDW-CV is calculated as  $100 \times (L2 - L1) / (L2 + L1)$ .



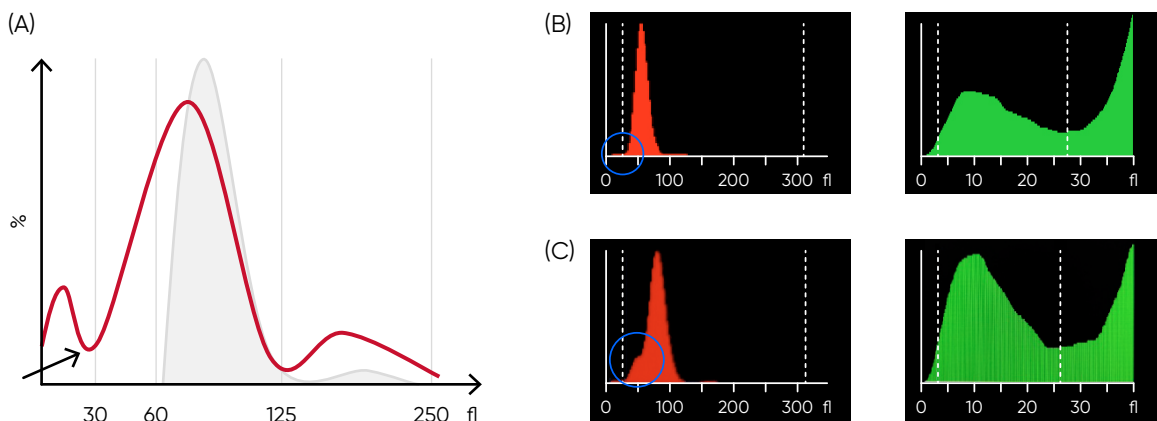
**Fig 7.** (A) Moderate anisocytosis (RDW 11%–20%). (B) Pronounced anisocytosis (RDW > 20%).



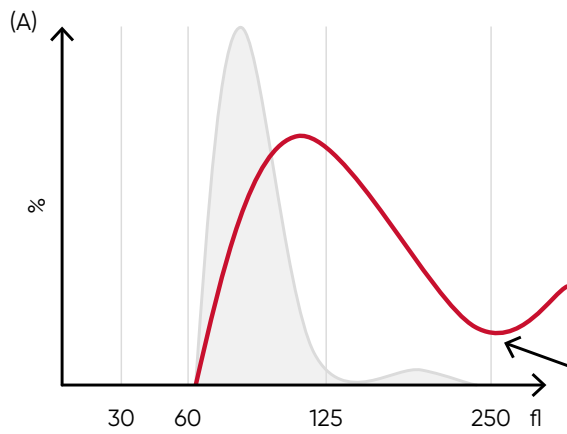
**Fig 8.** A shift of the RBC histogram to the left gives an indication of microcytic RBCs (smaller than normal).



**Fig 9.** A shift of the RBC histogram to the right gives an indication of macrocytic RBCs (larger than normal).



**Fig 10.** (A) Possible causes of an RBC histogram showing an abnormal high at lower discriminator can be RBC or WBC fragments, large (giant) PLTs, microcytic RBC, or PLT clumps. Action: check for PLT clumps on blood smear. (B) Swelab Lumi RBC and PLT histograms, showing small particle interference. (C) Swelab Lumi RBC and PLT histograms, showing cell fragments.

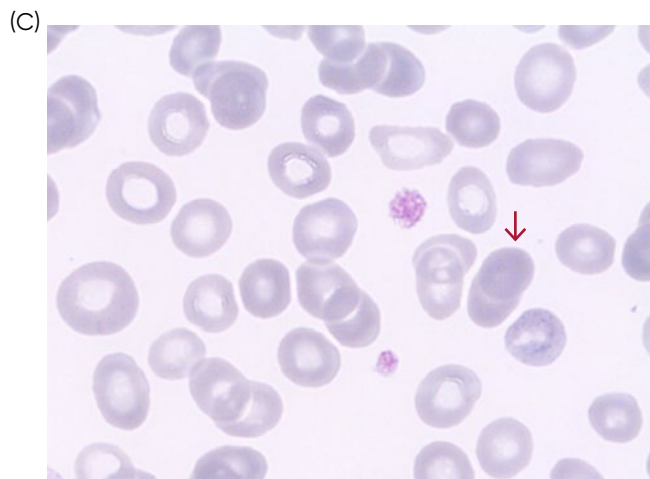
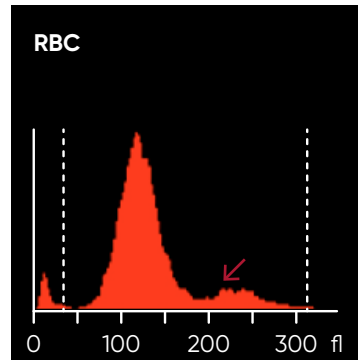


**Macrocytic distribution**

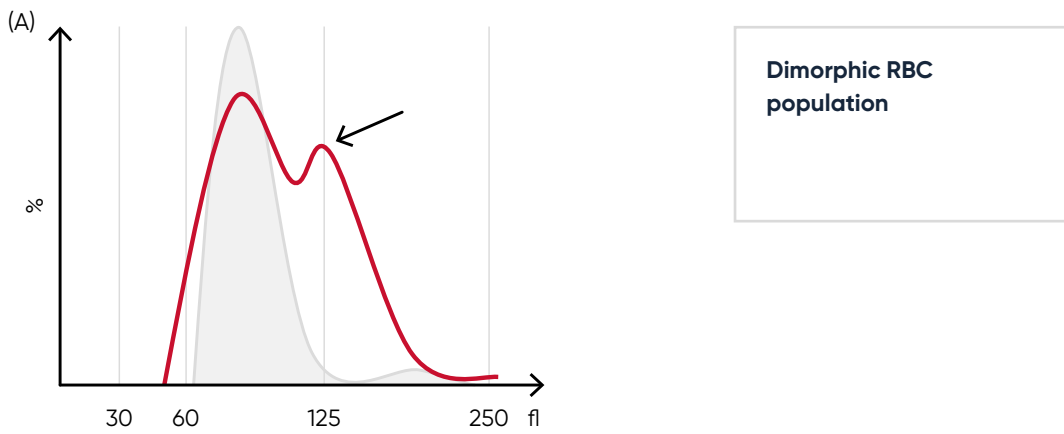
Action: look for agglutination on blood smear.

(B)

<b>RBC</b>	↓	0.94	$10^{12}/l$	3.50–5.50
HGB	↓	48	g/l	110–160
HCT	↓	12.8	%	37.0–54.0
<b>MCV</b>	↑	136.6	fl	80.0–100.0
MCH	↑	51.0	pg	27.0–34.0
MCHC	↑	374	g/l	320–360
RDW-CV	↑	33.8	%	11.0–16.0
RDW-SD	↑	165.5	fl	35.0–56.0

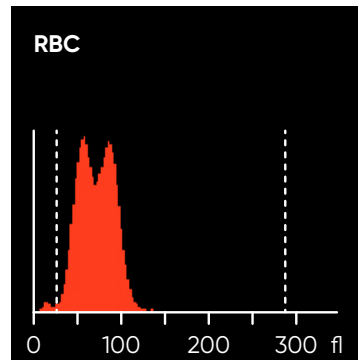


**Fig 11.** (A) Possible causes of an RBC histogram showing an abnormal high at upper discriminator can be RBC agglutination, cold agglutination, nucleated RBCs, or small LYMs, for example, due to chronic lymphocytic leukemia (CLL). Rule out cold agglutination by warming the sample at 37°C for 15 min and re-analyze. (B) Swelab Lumi results presented in numerical values and histogram from a sample with RBC aggregation (red arrow). (C) Microscopic image of RBC aggregation (red arrow).



(B)

<b>RBC</b>	4.59	R	$10^{12}/l$	3.50–5.50
HGB	102		g/l	110–160
HCT	34.6	R	%	37.0–54.0
MCV	75.5	R	fl	80.0–100.0
MCH	22.3	R	pg	27.0–34.0
MCHC	295	R	g/l	320–360
RDW-CV	***.		%	11.0–16.0
RDW-SD	***.		fl	35.0–56.0
<b>PLT</b>	241	R	$10^9/l$	100–300
MPV	9.6	R	fl	6.5–12.0
PDW	9.5	R	fl	9.0–17.0
PCT	0.230	R	%	0.108–0.282
P-LCR	25.1	R	%	11.0–45.0
P-LCC	60	R	$10^9/l$	30–90



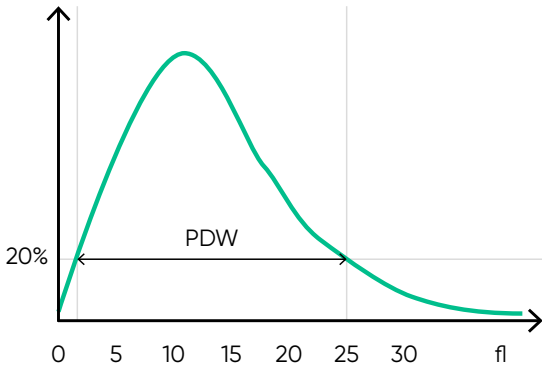
**Fig 12.** (A) Multiple RBC peaks (dimorphic population) can be a reflection of iron deficiency in recovery, dual-deficiency anemia (iron and vitamin B12/folic acid), or blood transfusion. (B) Swelab Lumi sample results, showing dimorphic RBC peak.



**Fig 13.** Blood film from a sample that has been stored for too long, showing spiny RBCs (red arrow).

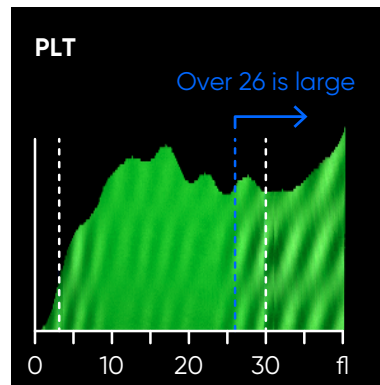
# The PLT histogram

From the PLT histogram, the MPV and PDW values are calculated from the area under the curve (Fig 14). MPV is the average PLT volume, while PDW provides information on the degree of variation in PLT size. The PLT large cell ratio (P-LCR) is the amount of PLT particles larger than 26 fL in relation to the total number of PLT particles, and this value is used to calculate the PLT large cell concentration (P-LCC) (Fig 15). Examples of thrombocyte abnormalities are shown in Figures 16 to 19.

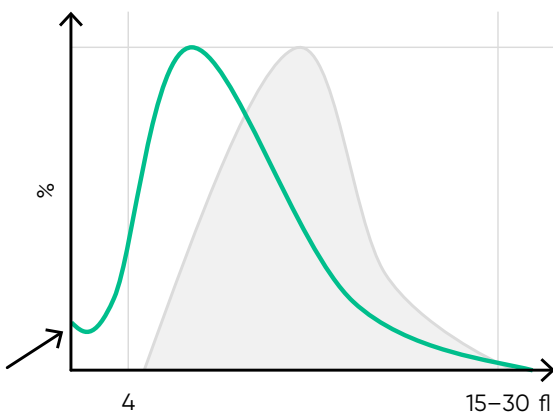


**Fig 14.** In Swelab Lumi, the normal platelet histogram shows a left-skewed distribution between 2 and 30 fL, with main part of the cells in the range of 2 to 15 fL. MPV is calculated as the sum of the size of all counted PLT pulses divided by the number of PLT pulses. PDW-SD is the geometric standard deviation of the average PLT size obtained by drawing an arbitrary line at a height of 20% of the y-axis.

<b>RBC</b>	↑	6.45	10 <sup>12</sup> /l	3.50–5.50
HGB		137	g/l	110–160
HCT		46.0	%	37.0–54.0
MCV	↓	71.3	fL	80.0–100.0
MCH	↓	21.2	pg	27.0–34.0
MCHC	↓	297	g/l	320–360
RDW-CV		15.5	%	11.0–16.0
RDW-SD		38.7	fL	35.0–56.0
<b>PLT</b>	?	201	10 <sup>9</sup> /l	100–300
MPV	? ↑	13.2	fL	6.5–12.0
PDW	? ↑	22.3	fL	9.0–17.0
PCT	?	0.265	%	0.108–0.282
P-LCR	? ↑	53.4	%	11.0–45.0
P-LCC	? ↑	107	10 <sup>9</sup> /l	30–90

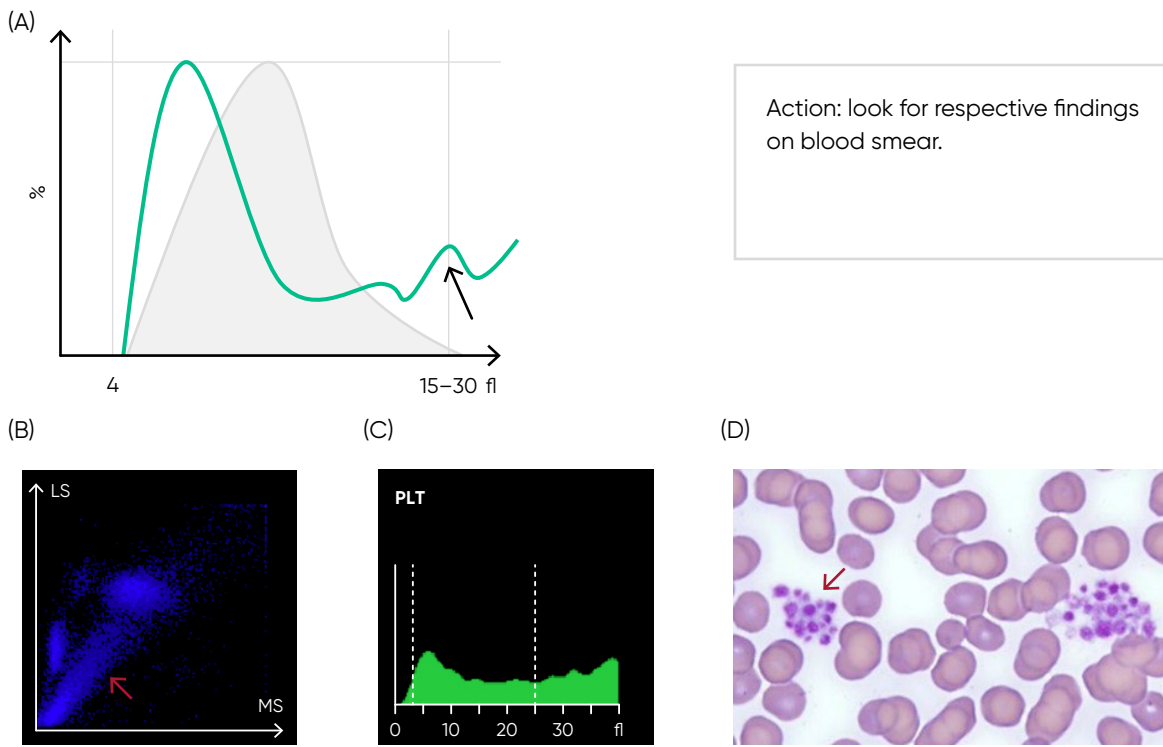


**Fig 15.** In Swelab Lumi, P-LCR is the counted PLT particles larger than 26 fL divided by the total counted PLT particles. The value is used to calculate P-LCC (= PLT × P-LCR). Interference with the P-LCR value can be due to the presence of PLT clumps, giant PLT, or microcytic RBCs in the sample.

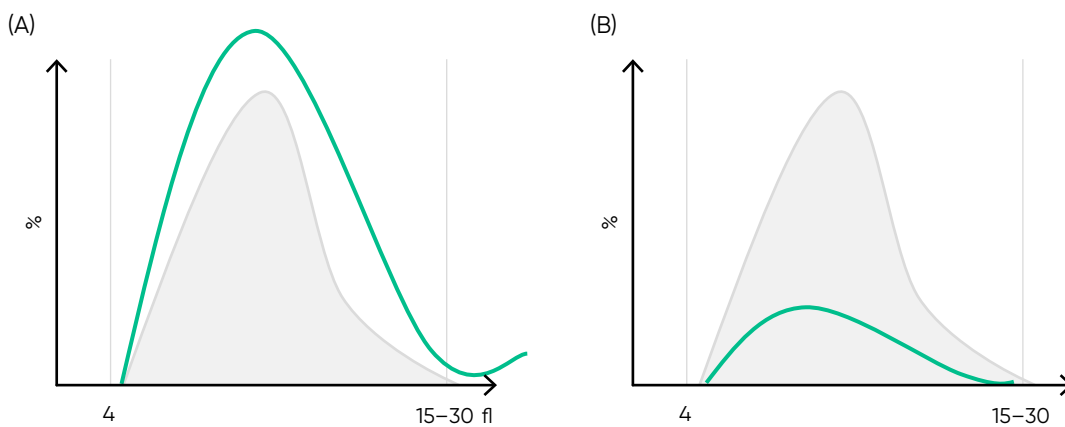
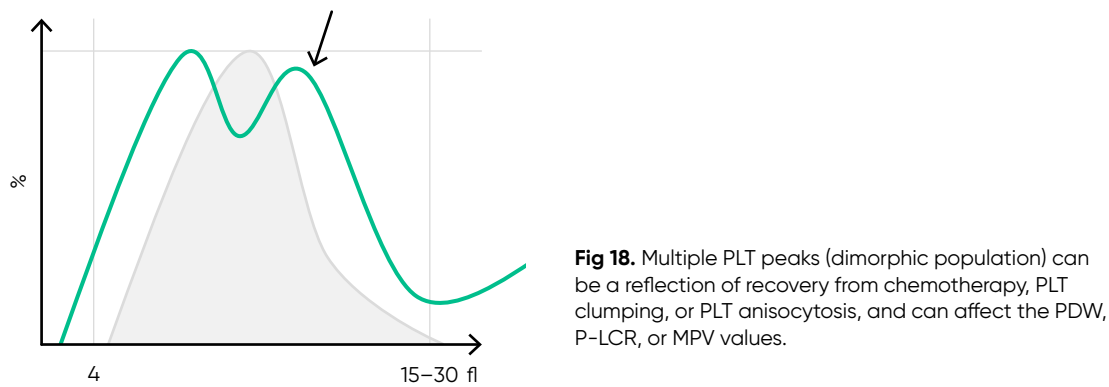


**Fig 16.** Possible causes of a PLT histogram showing an abnormal high at lower discriminator can be a high background count, PLT aggregation, RBC fragments, or a bacterial contamination of the reagent. Action: check background count, run auto-rinse if required, and reanalyze the sample. Look for respective findings on blood smear. If this abnormality happens in many samples, check reagent for contamination. If the abnormality is due to PLT aggregation, an abnormal high at upper discriminator is also shown.





**Fig 17.** Possible causes of a PLT histogram showing an abnormal high at upper discriminator can be giant PLTs, PLT clumps, microcytic RBCs, or RBC fragments. If PLT satellitism is observed on smear, this can be an indication of EDTA-incompatibility. Re-collect using citrate as anticoagulant and reanalyze the PLT count. (B) Swelab Lumi scatterplot with PLT aggregation (red arrow). (C) Swelab Lumi histogram of PLT aggregation. (D) Microscope image of PLT aggregation (red arrow).



**Fig 19.** Effect of (A) thrombocytosis and (B) thrombocytopenia on the histogram.

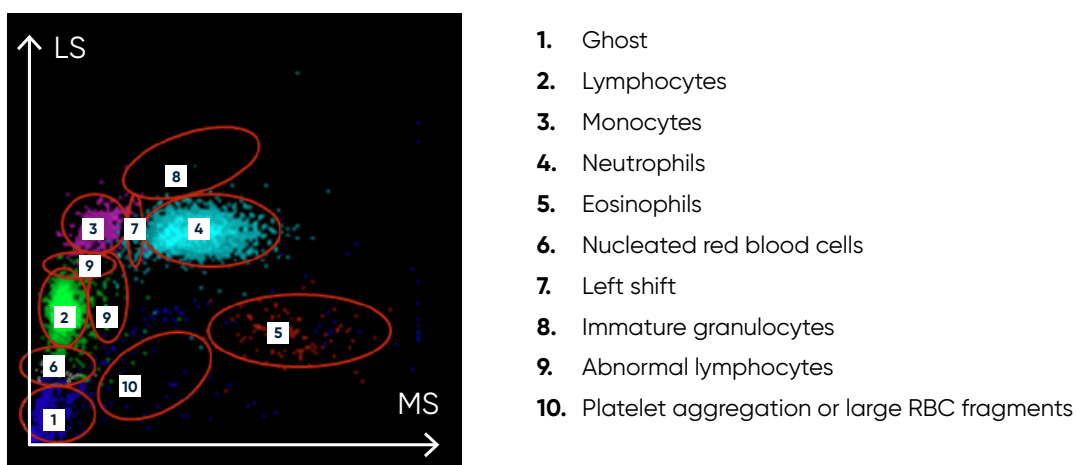
## The WBC scatterplots

The diameter of untreated cells of the WBC subpopulations ranges from 7  $\mu\text{m}$  for the smaller LYM cells to 20  $\mu\text{m}$  for the larger MON cells:

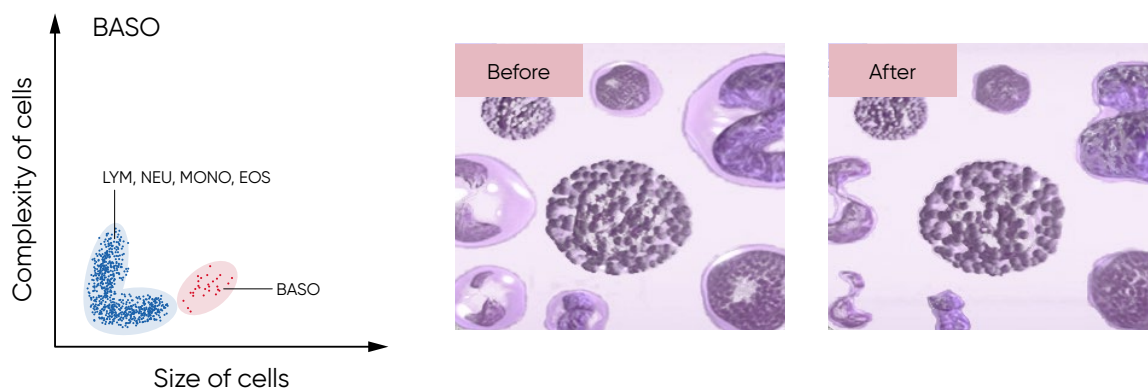
- Lymphocytes: 7–12  $\mu\text{m}$
- Basophils: 9–14  $\mu\text{m}$
- Neutrophils: 10–15  $\mu\text{m}$
- Eosinophils: 11–16  $\mu\text{m}$
- Monocytes: 12–20  $\mu\text{m}$

The cells of the WBC scatterplot are shown in Figure 20. As the RBCs are lysed by the hemolytic reagent, only PLTs and the WBCs are visible in the WBC channel. However, the small PLT particles (2–15 fL) do not interfere with the results for the larger WBCs. Basophils are identified by volume and granularity in a separate channel (Fig 21).

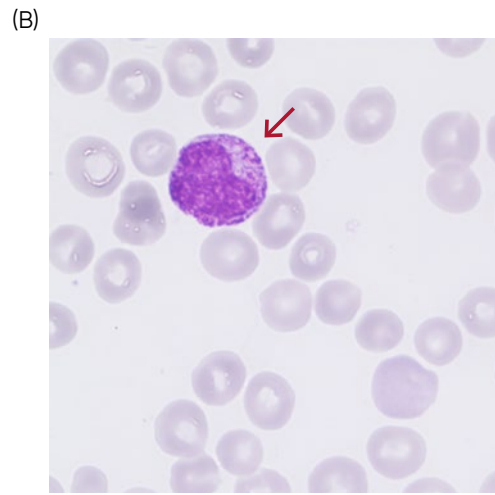
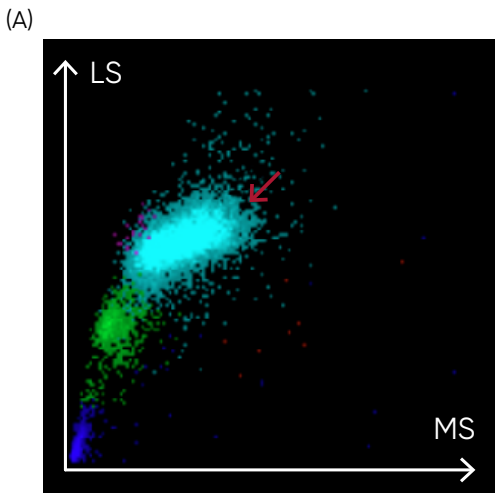
Examples of leukocyte abnormalities are shown in Figures 22 to 24.



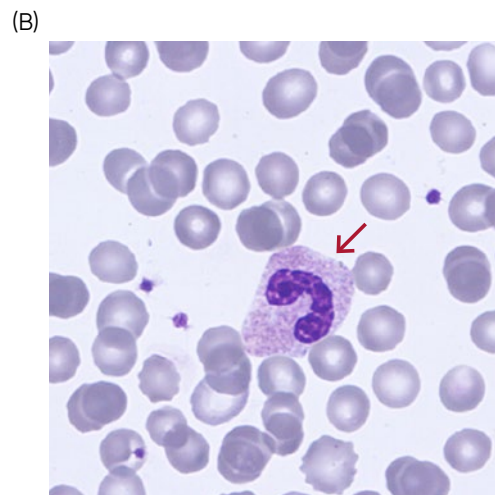
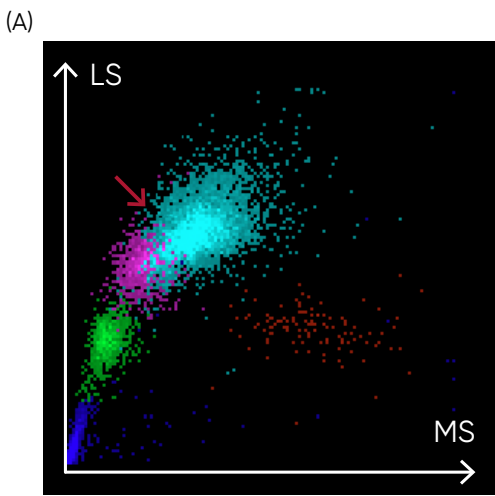
**Fig 20.** scatterplot from a normal sample, showing WBC subpopulations.



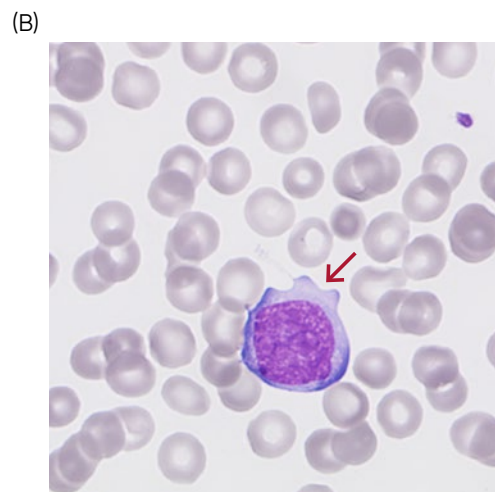
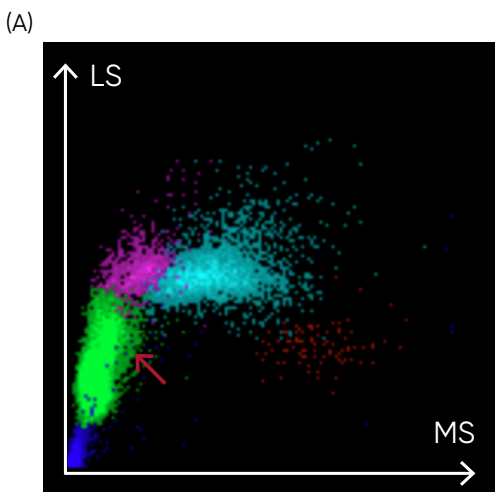
**Fig 21.** For the BASO count, the Swelab Lumi Lyse 1 reagent contains a special hemolytic agent that is used to extract the BASO cells specifically, while preserving the cell information.



**Fig 22.** (A) Swelab Lumi scatterplot with presence of immature granulocytes. (B) Microscopic image of an immature granulocyte.



**Fig 23.** (A) Swelab Lumi scatterplot showing left shift (presence of band neutrophils). (B) Microscopic image of a band neutrophil.



**Fig 24.** (A) Swelab Lumi scatterplot with presence of abnormal lymphocytes. (B) Microscopic image of an abnormal lymphocyte.

## Conclusion

As the test is cost-efficient and simple to use, a complete blood count is widely requested, both as an initial test in patient assessments as well as in monitoring of disease progression and treatment efficacy. A modern hematology system reports a range of parameters as numerical data. As supplement, the analyzer visualizes the counted cells in histograms and scatterplots. Understanding the histograms and scatterplots will provide relevant information to support a suggested diagnosis before any further investigations are ordered.

## Disclaimer

Swelab Lumi from Boule Diagnostics is an automated hematology analyzer for in vitro diagnostic use under laboratory conditions. Boule products do not make diagnoses on patients. Boule intends its diagnostic products (systems, software, and hardware) to be used to collect data reflecting the patient's hematological status. This data, in conjunction with other diagnostic information and the evaluation of the patient's condition, can be used by a trained clinician to establish a patient's diagnosis and to define clinical treatment.